



NYSSMA STUDY GUIDE

FOR

FLUTE: LEVEL ONE

By: Kerri Rubenstein

SIGHT READING

1. **Key Signatures:** Each sight reading will have a different key signature. Make sure to look at which notes you have to alter. Are the notes Natural, Flat or Sharp? The sight reading will have either 2 flats or 3 flats.



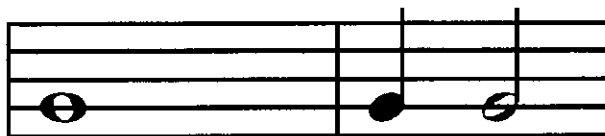
2. **Time Signatures:** Each sight reading will have a different time signature. You could have $\frac{2}{4}$ or $\frac{4}{4}$.

3. The notes that they could possibly give you to play are:



4. **Rhythms:** You may encounter only these 3 rhythms;

You will not have to worry about any rests! ☺



5. Sight reading exercises:

1.



2.



3.



6. SCALES: You must know, BY MEMORY, 3 Major Scales. Memorize Bb, F, and C.

Bb Major Scale:



F Major Scale:



C Major Scale:



7. Remember to have FUN! This should be a positive experience! The judges are lucky to hear you play such beautiful music!

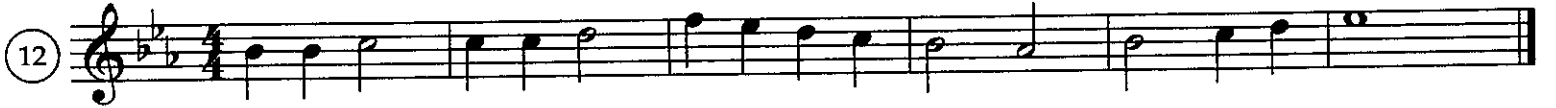
Level One

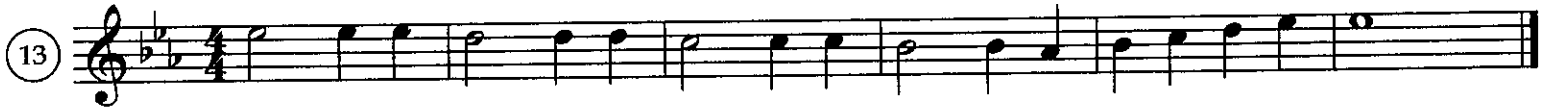
Kerri Rubenstein

Flute



11  Musical staff 11: Treble clef, key signature of three flats (B-flat, E-flat, A-flat), 4/4 time signature. The staff contains a sequence of notes: B-flat4, A-flat4, G4, F4, E4, D4, C4, B-flat3, A-flat3, G3, F3, E3, D3, C3. The notes are mostly quarter notes, with a half note at the end.

12  Musical staff 12: Treble clef, key signature of three flats, 4/4 time signature. The staff contains a sequence of notes: B-flat4, A-flat4, G4, F4, E4, D4, C4, B-flat3, A-flat3, G3, F3, E3, D3, C3. The notes are mostly quarter notes, with a half note at the end.

13  Musical staff 13: Treble clef, key signature of three flats, 4/4 time signature. The staff contains a sequence of notes: B-flat4, A-flat4, G4, F4, E4, D4, C4, B-flat3, A-flat3, G3, F3, E3, D3, C3. The notes are mostly quarter notes, with a half note at the end.

14  Musical staff 14: Treble clef, key signature of three flats, 4/4 time signature. The staff contains a sequence of notes: B-flat4, A-flat4, G4, F4, E4, D4, C4, B-flat3, A-flat3, G3, F3, E3, D3, C3. The notes are mostly quarter notes, with a half note at the end.

15  Musical staff 15: Treble clef, key signature of three flats, 2/4 time signature. The staff contains a sequence of notes: B-flat4, A-flat4, G4, F4, E4, D4, C4, B-flat3, A-flat3, G3, F3, E3, D3, C3. The notes are mostly quarter notes, with a half note at the end.

16  Musical staff 16: Treble clef, key signature of three flats, 2/4 time signature. The staff contains a sequence of notes: B-flat4, A-flat4, G4, F4, E4, D4, C4, B-flat3, A-flat3, G3, F3, E3, D3, C3. The notes are mostly quarter notes, with a half note at the end.

17  Musical staff 17: Treble clef, key signature of three flats, 4/4 time signature. The staff contains a sequence of notes: B-flat4, A-flat4, G4, F4, E4, D4, C4, B-flat3, A-flat3, G3, F3, E3, D3, C3. The notes are mostly quarter notes, with a half note at the end.

18  Musical staff 18: Treble clef, key signature of three flats, 4/4 time signature. The staff contains a sequence of notes: B-flat4, A-flat4, G4, F4, E4, D4, C4, B-flat3, A-flat3, G3, F3, E3, D3, C3. The notes are mostly quarter notes, with a half note at the end.

19  Musical staff 19: Treble clef, key signature of three flats, 2/4 time signature. The staff contains a sequence of notes: B-flat4, A-flat4, G4, F4, E4, D4, C4, B-flat3, A-flat3, G3, F3, E3, D3, C3. The notes are mostly quarter notes, with a half note at the end.

20  Musical staff 20: Treble clef, key signature of three flats, 4/4 time signature. The staff contains a sequence of notes: B-flat4, A-flat4, G4, F4, E4, D4, C4, B-flat3, A-flat3, G3, F3, E3, D3, C3. The notes are mostly quarter notes, with a half note at the end.