



NYSSMA STUDY GUIDE
FOR
FLUTE: LEVEL TWO
By: Kerri Rubenstein

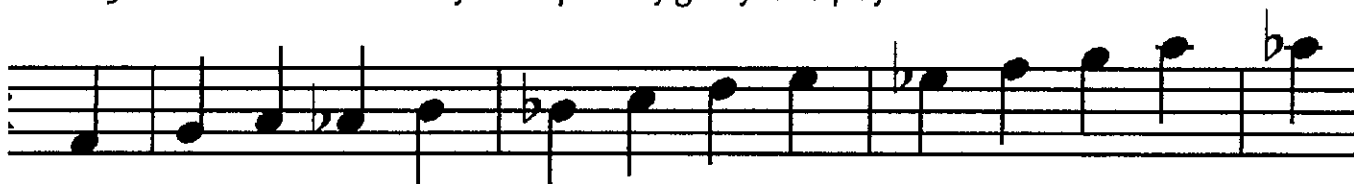
SIGHT READING

1. Key Signatures: Each sight reading will have a different key signature. Make sure to look at which notes you have to alter. Are the notes Natural, Flat or Sharp? The sight reading will have 2 flat, 3 flats OR 1 flat.



2. Time Signatures: Each sight reading will have a different time signature. You could have $\frac{2}{4}$, $\frac{3}{4}$ or $\frac{4}{4}$.

3. The notes that they could possibly give you to play are:



4. Rhythms: You may encounter only these 5 rhythms;
You will not have to worry about any rests! ☺



5. Sight reading exercises:

1.

2.

3.

6. SCALES: You must know, BY MEMORY, 3 Major Scales. Memorize Bb, F, and C.

Bb Major Scale:

F Major Scale:

C Major Scale:

7. Remember to have FUN! This should be a positive experience! The judges are lucky to hear you play such beautiful music!

