

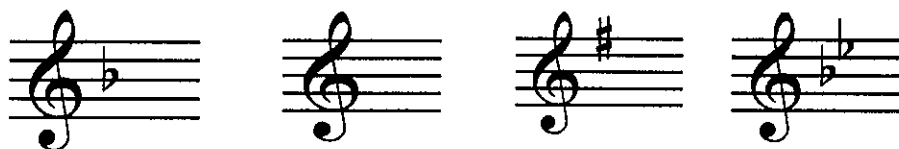


NYSSMA STUDY GUIDE FOR CLARINET: LEVEL THREE

By: Kerri Rubenstein

SIGHT READING

1. **Key Signatures:** Each sight reading will have a different key signature. Make sure to look at which notes you have to alter. Are the notes Natural, Flat or Sharp? The sight reading will have 1 flat, No flats, 1 sharp or 2 flats.



2. **Time Signatures:** Each sight reading will have a different time signature. You could have $\frac{2}{4}$, $\frac{3}{4}$ or $\frac{4}{4}$.

3. The notes that they could possibly give you to play are:



4. **Rhythms:** You may encounter only these 7 rhythms with 2 types of rests;



5. **Sight-reading exercises:**



Ex. 3 

Ex. 4 

6. SCALES: You must know, **BY MEMORY**, 7 Major Scales. Memorize C, F, G, Bb, Eb, D and A.

C Major Scale: 

F Major Scale: 

G Major Scale: 

Bb Major Scale: 

Eb Major Scale: 

D Major Scale: 

A Major Scale: 

7. Remember to have **FUN!** This should be a positive experience! The judges are lucky to hear you play such beautiful music!

Level Three

Kerri Rubenstein

Clarinet



1 Musical staff 1: Treble clef, 4/4 time. Notes: G4 (p), A4, B4, C5, D5, E5, F5, G5, A5, B5, C6, D6, E6, F6, G6, A6, B6, C7, D7, E7, F7, G7, A7, B7, C8. Dynamics: p, f, p.

2 Musical staff 2: Treble clef, 4/4 time. Notes: G4 (p), A4, B4, C5, D5, E5, F5, G5, A5, B5, C6, D6, E6, F6, G6, A6, B6, C7, D7, E7, F7, G7, A7, B7, C8. Dynamics: p, f.

3 Musical staff 3: Treble clef, 4/4 time. Notes: G4 (mf), A4, B4, C5, D5, E5, F5, G5, A5, B5, C6, D6, E6, F6, G6, A6, B6, C7, D7, E7, F7, G7, A7, B7, C8. Dynamics: mf, f.

4 Musical staff 4: Treble clef, 2/4 time. Notes: G4 (f), A4, B4, C5, D5, E5, F5, G5, A5, B5, C6, D6, E6, F6, G6, A6, B6, C7, D7, E7, F7, G7, A7, B7, C8. Dynamics: f, p, f.

5 Musical staff 5: Treble clef, 4/4 time. Notes: G4 (f), A4, B4, C5, D5, E5, F5, G5, A5, B5, C6, D6, E6, F6, G6, A6, B6, C7, D7, E7, F7, G7, A7, B7, C8. Dynamics: f, p, f.

6 Musical staff 6: Treble clef, 4/4 time. Notes: G4 (p), A4, B4, C5, D5, E5, F5, G5, A5, B5, C6, D6, E6, F6, G6, A6, B6, C7, D7, E7, F7, G7, A7, B7, C8. Dynamics: p, f.

7 Musical staff 7: Treble clef, 4/4 time. Notes: G4 (f), A4, B4, C5, D5, E5, F5, G5, A5, B5, C6, D6, E6, F6, G6, A6, B6, C7, D7, E7, F7, G7, A7, B7, C8. Dynamics: f, p, f.

8 Musical staff 8: Treble clef, 2/4 time. Notes: G4 (p), A4, B4, C5, D5, E5, F5, G5, A5, B5, C6, D6, E6, F6, G6, A6, B6, C7, D7, E7, F7, G7, A7, B7, C8. Dynamics: p, f.

9 Musical staff 9: Treble clef, 4/4 time. Notes: G4 (f), A4, B4, C5, D5, E5, F5, G5, A5, B5, C6, D6, E6, F6, G6, A6, B6, C7, D7, E7, F7, G7, A7, B7, C8. Dynamics: f, p, f.

10 Musical staff 10: Treble clef, 3/4 time. Notes: G4 (p), A4, B4, C5, D5, E5, F5, G5, A5, B5, C6, D6, E6, F6, G6, A6, B6, C7, D7, E7, F7, G7, A7, B7, C8. Dynamics: p, f.

11 *p* *f*

12 *f* *p* *f*

13 *f* *p* *f*

14 *f* *p* *f*

15 *p* *f*

16 *f* *p*

17 *p* *f*

18 *f* *p* *f*

19 *mf* *f* *p*

20 *p* *f*